

IT Sligo
2016/17

Key Facts and Figures

NEW ENTRANTS

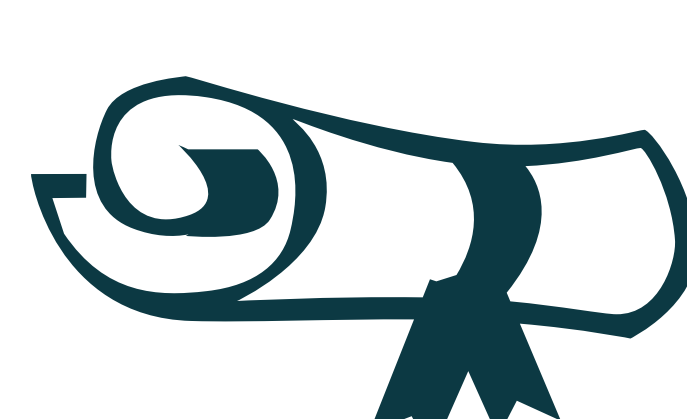
Full-Time Undergraduate New Entrants

TOTAL
1,075

432
40%
Engineering & Design

369
34%
Business & Social Science

274
26%
Science



39% of new entrants went into an Honours Bachelor Degree Programme.

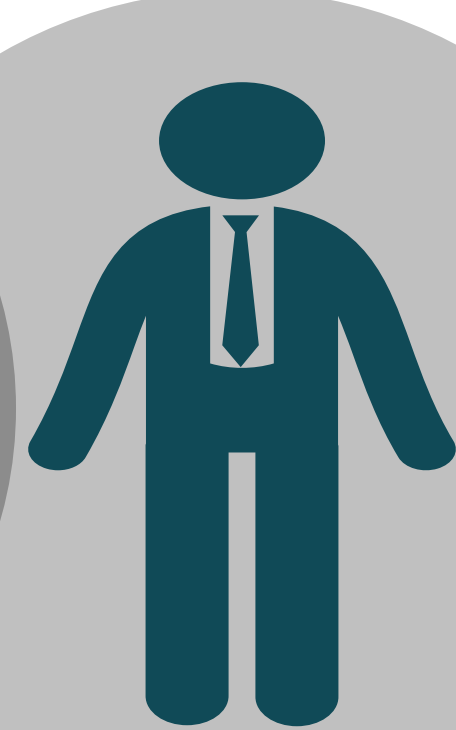


The most popular field of study was Engineering accounting for 22% of New Entrants

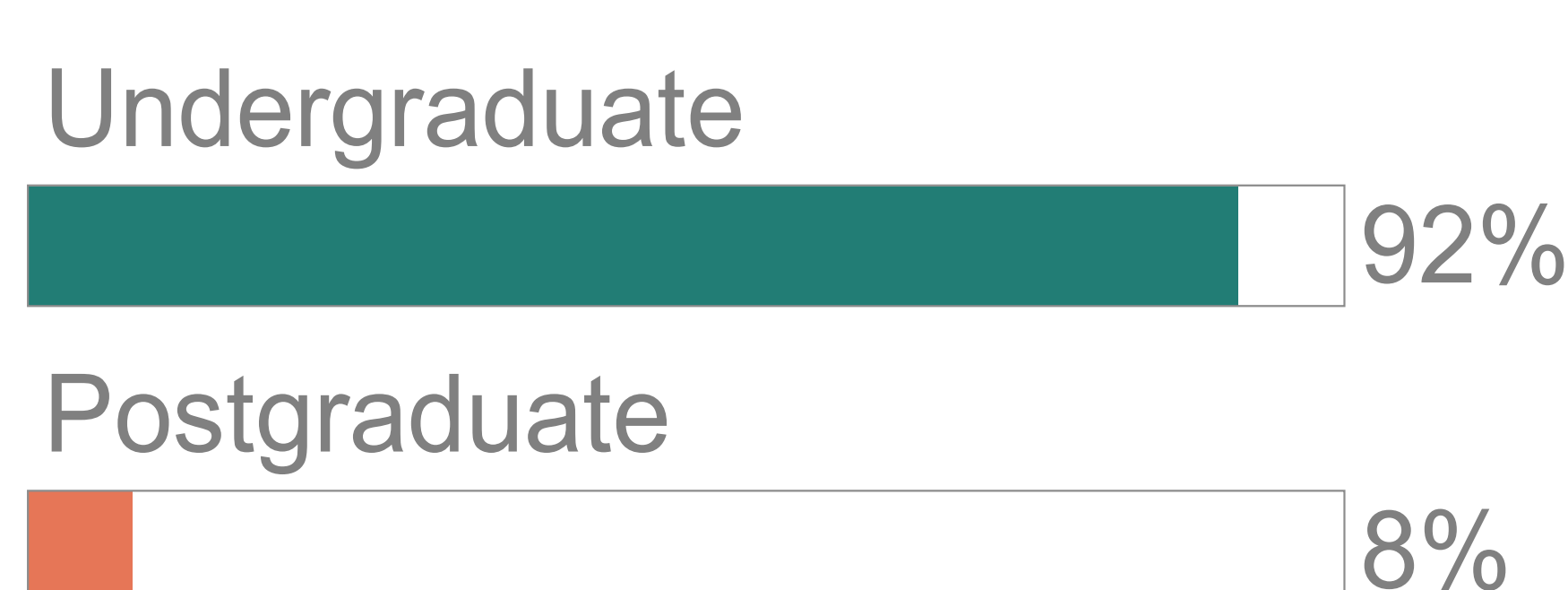
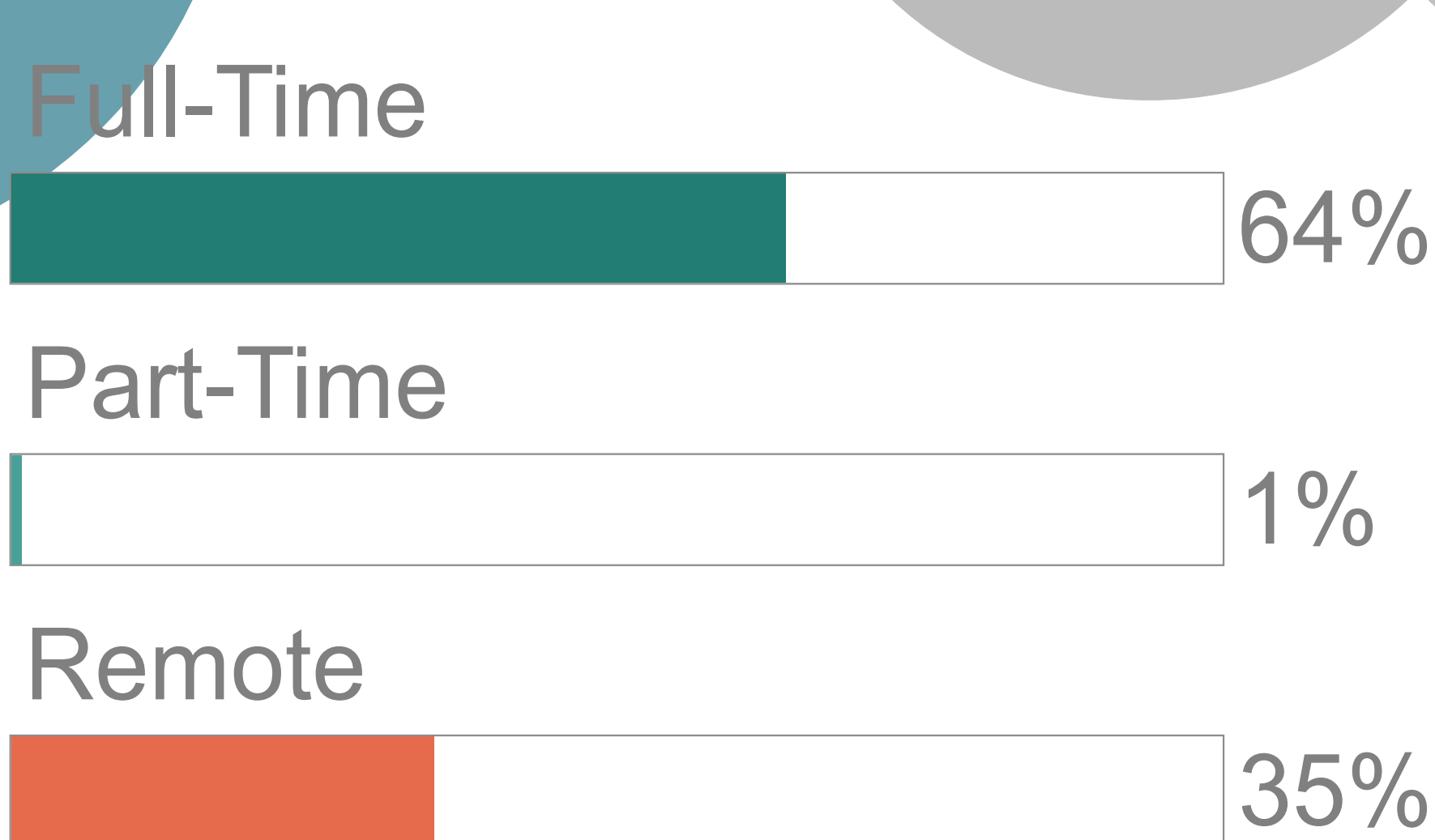
ENROLMENTS

TOTAL
5,713

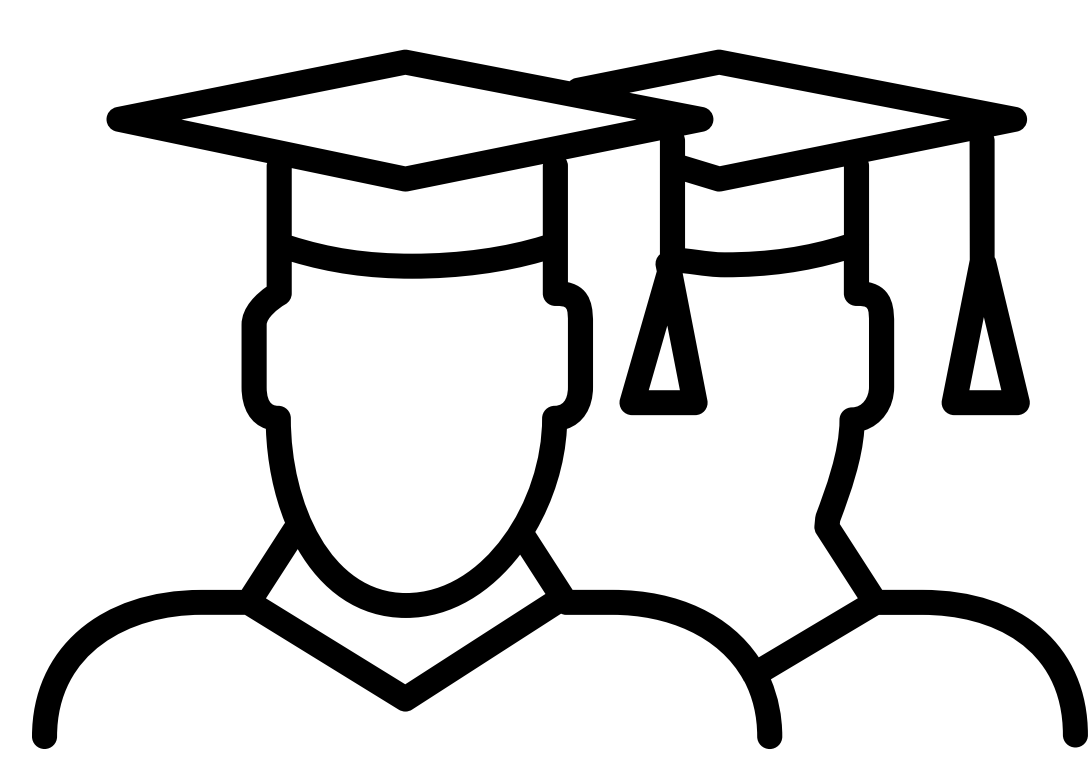
59%



41%



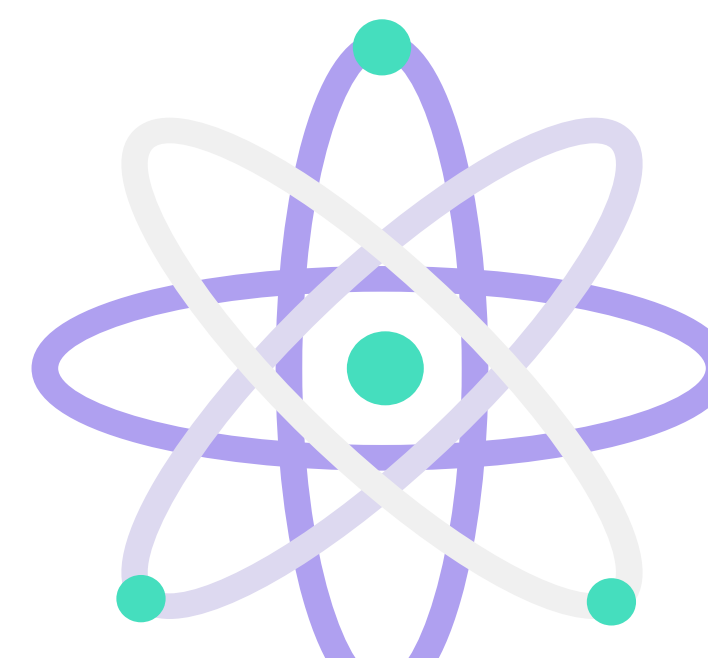
GRADUATES



1546
Graduates



17%
of Honours Bachelor Degree graduates got a 1st class qualification



47%
came from Science, Mathematics & Computing and Engineering Manufacturing and Construction



24%
came from the Arts, Humanities, Social Sciences, Business and Law

PARTICIPATION

16%
Full-Time

2016/17
Mature New Undergraduate Entrants

36%
Part-Time

2016/17
Flexible Learners

21%
Full-Time

2010/11
Mature New Undergraduate Entrants

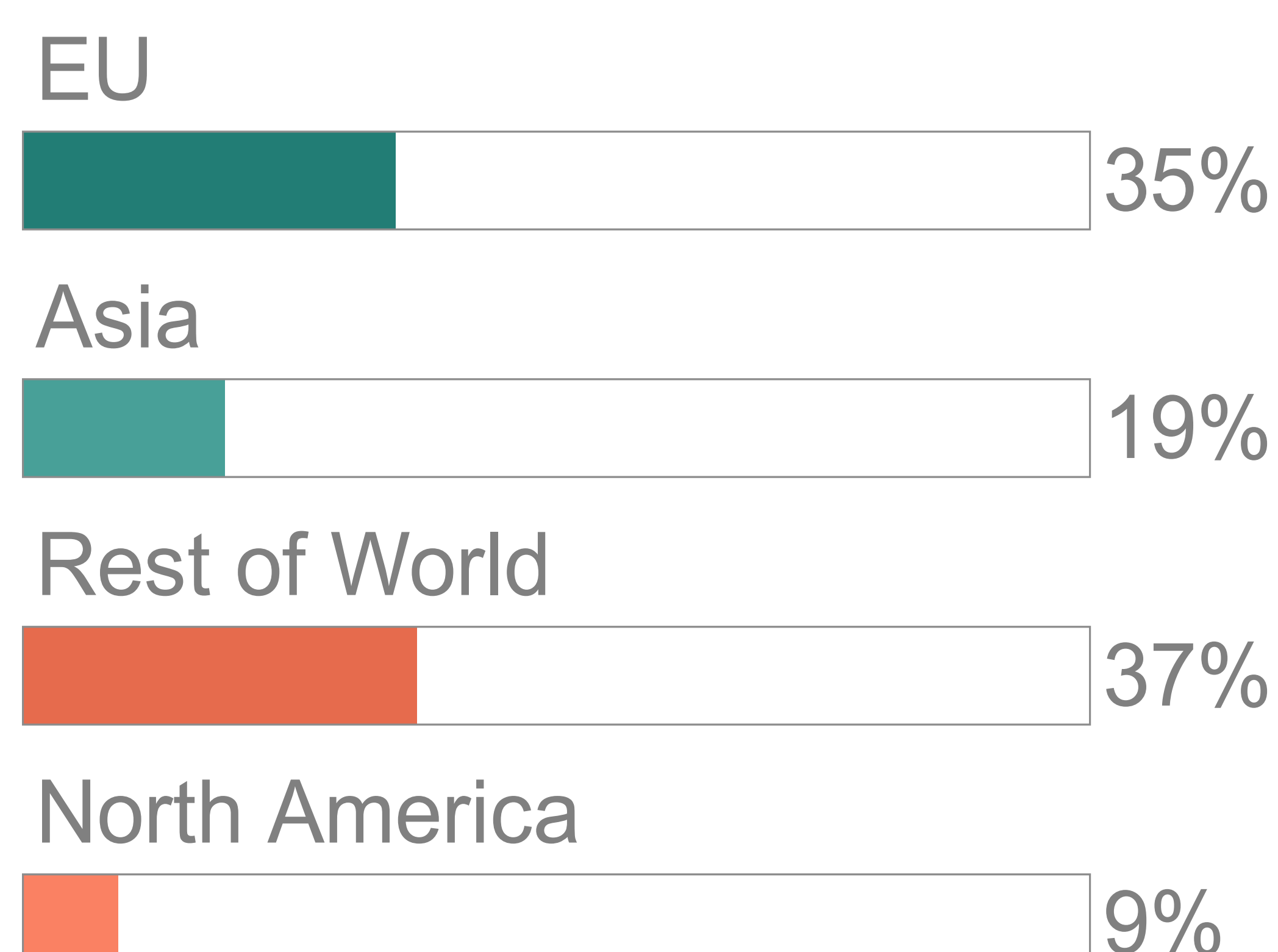
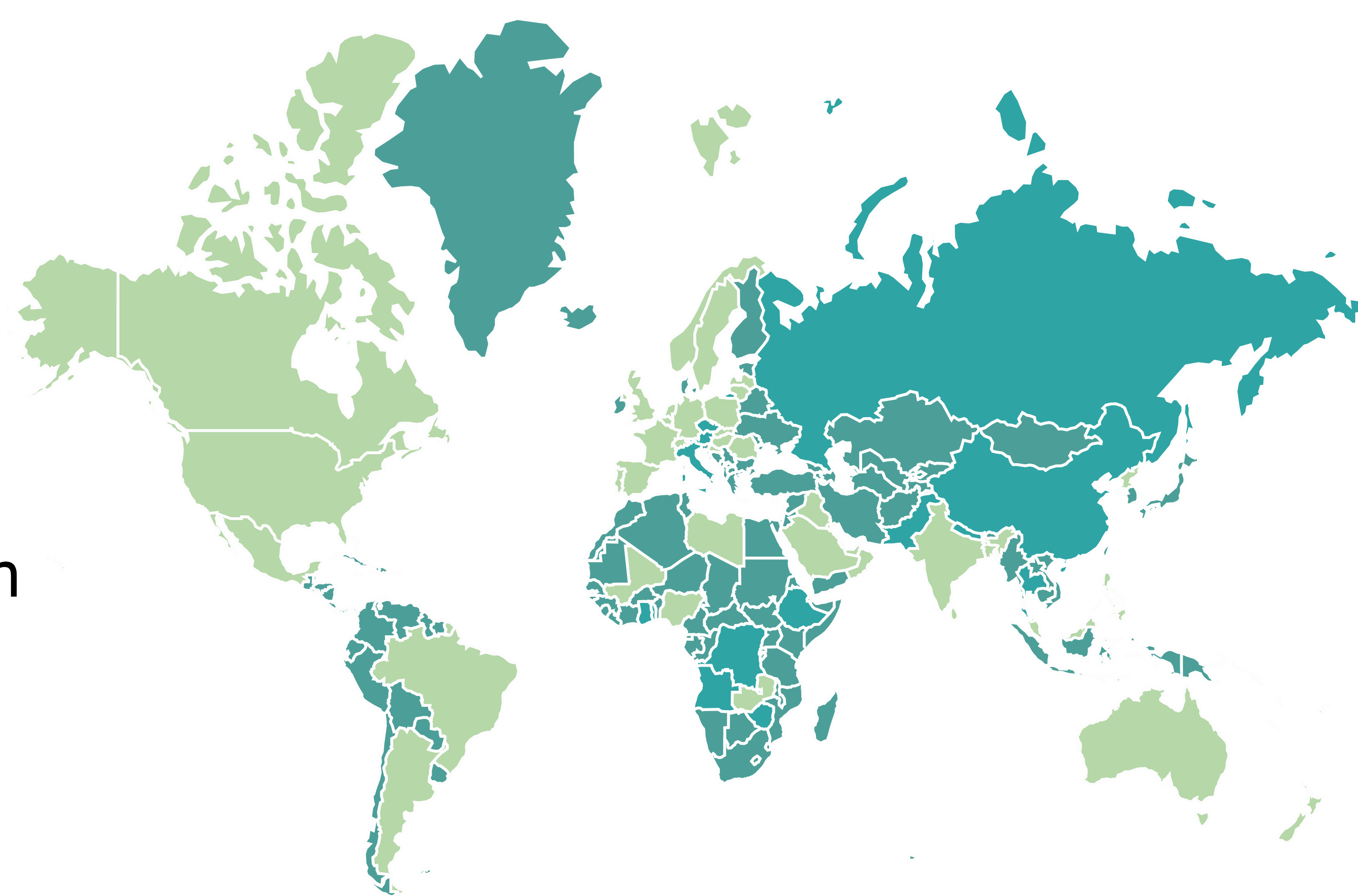
27%
Part-Time

2010/11
Flexible Learners

INTERNATIONAL PARTICIPATION

359
International Students from

49
Countries



RESEARCH

73 Students
Engaged in
Research

0.6%

Increase in research provision in the past 6 years



€2.1M Contract Research Income 2014/2015