



Make Your Future Happen

Fact sheet
2023-24



Ollscoil
Teicneolaíochta
an Atlantaigh

Atlantic
Technological
University

WHY CHOOSE ATU SLIGO	2
LOCATION	3
ACADEMIC INFORMATION	4
APPLICATION PROCEDURE	5
WELCOME AND REGISTRATION	6
ACCOMMODATION	7
ACCESS OFFICE	8
MEET THE TEAM	9
USEFUL INFORMATION	10
CAMPUS MAP	11



Factsheet

CONTENTS



COLLABORATIVE STRENGTH

ATU Sligo has a student population of almost 9,000 learners. ATU Sligo is home to students from 36 countries worldwide. We are part of the Atlantic TU which has a population of over 20,000 learners spanning 600 academic programmes. ATU's strength lies in our collaborative ethos



YOUR CAREER IS OUR FOCUS

We work closely with industry to tailor our courses so that when you graduate, you have a qualification which employers recognise and want



A MODERN CAMPUS

Be part of a 72 acre campus that offers state-of-the-art facilities and landscaped grounds. The campus is just a 10 minute walk from Sligo town centre



AN AMAZING PLACE TO LIVE

Sligo combines a vibrant urban centre with stunning natural beauty from its thriving culinary scene to its world class beaches at Strandhill and Rosses Point there are options for everyone.



IT'S PERSONAL

Small class sizes mean students benefit from individual attention and support from our dedicated staff. More than just a number our students get to know their lecturers and classmates on a first name basis



SPORTS FACILITIES

At the centre of our campus sports facilities is the Knocknarea Arena. This sporting hub is home to a multi-purpose sports hall, state of the art fitness suite and specialised exercise studios. Outdoor facilities include, running track, 3G Astro turf pitch and grass pitches.



Why Choose
ATU SLIGO 

WHERE ARE WE?



ATU SLIGO

Located on the West Coast of Ireland, along the Wild Atlantic Way

DUBLIN INTERNATIONAL AIRPORT

Located on the East Coast of Ireland, it is the closest International Airport and is approx. 3 hours from Sligo

PUBLIC TRANSPORT



Expressway Route 23-
Coach/Bus services from Dublin
international Airport to Sligo
Timetables and tickets can be purchased
online, scan QR code for more information



 SCAN ME



Train-
Trains from Dublin Connolly Station to Sligo
Timetables and tickets can be purchased
online, scan QR code for more information



 SCAN ME

Location

ATU SLIGO



ACADEMIC INFORMATION

Key points

FACULTIES



→ BUSINESS AND SOCIAL SCIENCES

Within this Faculty we have three departments, Business, Marketing, Tourism and Sport and Social Sciences. Please see the website for more details on the courses each of the departments offer,

Faculty of Business and Social Sciences - Atlantic Technological University Sligo (itsligo.ie)

→ ENGINEERING AND DESIGN

Within this Faculty we have five departments, Mechatronic Engineering, Mechanical and Manufacturing Engineering, Civil Engineering and Construction, Computing and Electronic Engineering and Yeats Academy of Arts, Design & Architecture. Please see the website for more details on the courses each of the departments offer,

Faculty of Engineering and Design - Atlantic Technological University Sligo (itsligo.ie)

→ SCIENCE

Within this Faculty we have three departments, Life Sciences, Environmental Science and Health & Nutritional Science. Please see the website for more details on the courses each of the departments offer,

Faculty of Science - Atlantic Technological University Sligo (itsligo.ie)

ACADEMIC CALENDAR

Our academic calendar shows important dates for the 2023-24 Academic Year including Term dates, Holidays and Exam Periods. Please see our website for the most up to date Academic Calendar

Academic Calendar - Atlantic Technological University Sligo (itsligo.ie)

LEARNING

We understand there is more than one way to educate. We are big on practical learning, which means we reinforce theory with hands on experience in labs and workshops. We also boast the best student to lecturer ratio

in Ireland as outlined by the Good University Guide 2022

YEATS LIBRARY

Spread over three floors, the Yeats Library is a world class facility providing all the resources a student needs to excel in their programme of study. The library has over 700 workspaces, 70,000 printed books, while students have 24/7 access to over 140,000 e-books and e-journals.



APPLICATION PROCEDURE



Lets Get Started

STEP 1- REVIEW OUR PARTNERS

Review the list of **ATU Sligo Erasmus Partners**. If your college has an existing Inter Institutional Agreement with ATU Sligo then you should discuss your plans with your International office. If not, you should ask them to contact us on your behalf

STEP 2- CHECK THE AVAILABLE PROGRAMMES

Review the list of available **Erasmus programmes 2023** Please note the relevant year and semester. These are the only programmes available to incoming Erasmus applicants

STEP 3- COMPLETE THE APPLICATION FORM

Complete the **ATU Sligo Erasmus Application Form**. When we receive your application, you will receive a notification with an application number. Please use this when communicating with ATU Sligo

STEP 4- COMPLETE THE LEARNING AGREEMENT

If you are offered a place, we will send you an email with a signed Learning Agreement and a URL link to finalise your application.

The Learning Agreement will specify a fixed menu of subjects (modules) available on the programme you are being offered.

Where applicable you will need to choose the elective subjects (modules). Elective modules are denoted by an [E] at the end of the subject name. All other subjects without an [E] at the end of the subject name are mandatory

You must print off the Learning Agreement and have it approved/signed by your college (maximum of 30 ECTS credits)

STEP 5- RETURN THE SIGNED LEARNING AGREEMENT

To complete your application you must upload the signed Learning Agreement via the URL link. This will be included in the email communication you received from ATU Sligo. You will receive a confirmation letter once your acceptance of the Learning Agreement and offered place is processed.

The subjects on your finalised Learning Agreement will earn you credit at home through the European Credit Transfer System. A transcript of your exam results will be sent to your International Office

Nomination deadlines are posted on our website

Welcome and REGISTRATION ←

HOW TO REGISTER

You will get an email from the Admissions Office with link and instructions.

Login portal and information guide available online

STEP BY STEP GUIDE

To view the step by step registration guide please go to *New Student Registration - Atlantic Technological University Sligo (itsligo.ie)*

FORGOT/LOST PIN

Your User ID and PIN can be found in your offer email. The User ID will be your student number that will begin with S. The PIN or password is also included in the letter. If you change your pin and later forget or lose it, please go to *ATU Password Control*

CONTACT US

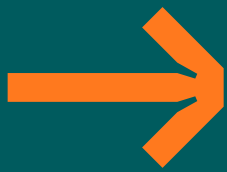
If you require any assistance throughout the registration process please contact our Admissions Team at admissions@itsligo.ie



MOODLE

24 hours after registration, students can access the student learning platform, Moodle. Within this platform students will access much of your learning resources. Every student has an account personalised to their course of study and active use of your account is important in preparing you for success at ATU Sligo. The content to reflect your course of study become visible 24 hours following the completion of registration with ATU Sligo.





Whats Next

BOOK YOUR ACCOMMODATION

ATU do not own or manage any student accommodation. We are currently experiencing a high demand for accommodation so we recommend you secure accommodation before travelling. The Student Union can support you in finding accommodation, please see the SU webpage for options available. The designated Officer to deal with accommodation is James Mc Grath, Vice President for Wellbeing and Engagement. If you wish to contact James, call 071-9141887 or email support@atussu.ie.

STUDENT VILLAGES

There are several purpose-built student villages located around ATU Sligo. All are within 1 to 12 minutes of walking distance. These self-catering student villages have been designed with the needs of the student in mind. The two main student residence management companies are *Winters Property Management* and *Ballincastle Property Services* (**you can contact them directly**)

GATEWAY

WWW.GATEWAYAPARTMENTS.IE

ARD NUA

WWW.ARDNUA.COM

UNI ROOMS @ ARD NUA

WWW.UNIROOMS.IE

YEATS VILLAGE

WWW.YEATSVILLAGE.NET

BENBULBEN COURT APARTMENTS

WWW.BENBULBENCOURT.IE

CLARION VILLAGE

WWW.THEVILLAGECLARION.COM

THE GROVE STUDENT COMPLEX

WWW.THEGROVESLIGO.IE

MILLIGAN COURT

WWW.MILLIGANCOURT.IE



PRIVATE RENT

The area around the college has an excellent selection of private apartments and houses. This is organised through private landlords and can be popular amongst students wishing to live with friends. Please see links below

- ATUSSU Sligo
- Daft.ie
- Rent.ie
- Property.ie

FACEBOOK GROUPS

Sligo Accommodation
Rent in Sligo

If you have specific learning needs, a disability, or any circumstances which might need individual consideration, our Access Office is here to help.

LEARNING SUPPORT

Our dedicated learning support tutors support students who have dyslexia or other specific learning difficulties. The team can organise dyslexia screening and psycho-educational assessment referral where necessary. Students have access to the latest assistive technology and can engage with the learning support tutor on a one-to-one or group basis. Reasonable accommodation at exams and liaising with relevant staff are other ways our learning support tutors can help.

DISABILITY SUPPORT

Our disability support service provides an individual support plan tailored to the specific needs of the student. Engagement with other relevant staff ensures appropriate plans are in place. This plan combined with ongoing advice, assistive technology, and support allows students to reach their full potential.

ASSISTIVE TECHNOLOGY

A comprehensive and extremely modern assistive technology support is available. It is central to our facilitation of students with disabilities or learning difficulties. Supports here include matching the person to technology assessment which maximises productivity and independence, training in how to use the technology, and full access to our dedicated assistive technology suite.

CONTACT

It's important that you contact the Access Office as soon as possible following registration so that specific support can be put in place to support your needs. The Access Team can be contacted by the details below

ACCESS OFFICE CONTACT DETAILS

Mature Students contact:

Linda McGloin, Access Officer Telephone: +353 (0) 71 9305417 or email access@itsligo.ie

HEAR, Student Assistance:

Lesley Walsh,
Assistant Access Officer Telephone: +353 (0) 71 9155433 or email access@itsligo.ie

DARE, Disability Support or Autism Supports:

Shelley Brady, Disability Officer,
Telephone: +353 (0) 71 9137355 or email disability@itsligo.ie

Specific Learning Difficulties (SpLD):

Andrea Rynn,
Learning Support Tutor,
Telephone: +353 (0) 71 9305400
or email learningsupport@itsligo.ie



student supports
ACCESS OFFICE

Our Team is on hand to answer any of your queries so please get in touch with us using the contact details below

INTERNATIONAL OFFICE

international.sligo@atu.ie



PATRICK LYNCH

International Office Manager
patrick.lynch@atu.ie

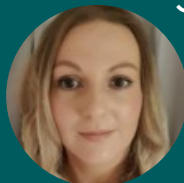


DECLAN REIDY

International Officer
declan.reidy@atu.ie

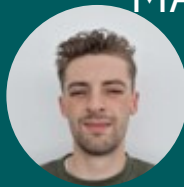
ERASMUS OFFICE

erasmus.sligo@atu.ie



STEPHANIE ALDRIDGE

Erasmus Coordinator
stephanie.aldridge@atu.ie



MATTHEW CONLON OATES

Senior Student Ambassador
Matthew.ConlonOates@atu.ie

WHAT WE HELP WITH?

We are one of many support services within ATU Sligo and we will deal with:

- Erasmus / Exchange
- Irish Visa and Immigration
- International Admissions
- International Student Support
- Official documents that need to be completed or signed by ATU Sligo should be sent to the Office.
- Letters of Registration

Contact us

MEET THE TEAM



USEFUL INFORMATION

Tips

Useful Numbers/ Links

Emergency Services	999/ 112
Sligo Garda Station	0719157000
Sligo University Hospital	0719171111
Bus Eireann	0719160066
Caredoc Sligo	0818365399
Crime Victims Helpline	1850211407
Garda Confidential Line	1800666111
Money Advice and Budgeting Service	0761072730
ATU Sligo Students Union	0719141887
Sligo Railway Station	0719169888
Threshold(your rights and obligations as a tenant)	www.threshold.ie
Sligo Citizens Information Centre	0761076390
Local Link	0719650437
Local Link- Donegal Sligo Leitrim TFI Local Link is a rural service that operates 103 bus routes Timetables can be found online, scan QR code for more information	 

CAMPUS MAP

Finding your way

Legend

- | | | |
|---|-----------------------------|---------------------------|
| A Main Reception, Administration & Yeats Library | G Innovation Centre | Bike Shelter |
| B Science and Canteen | H Student Centre | Car Electric charge point |
| C Business & Social Sciences | K YAADA | Bus Stop |
| D Business & Social Sciences | L YAADA | Paid Parking |
| E Engineering & Design | M Applied Technology | |
| F Engineering & Design | P Knocknaree Arena | |
| | B Clarion 8 | |

