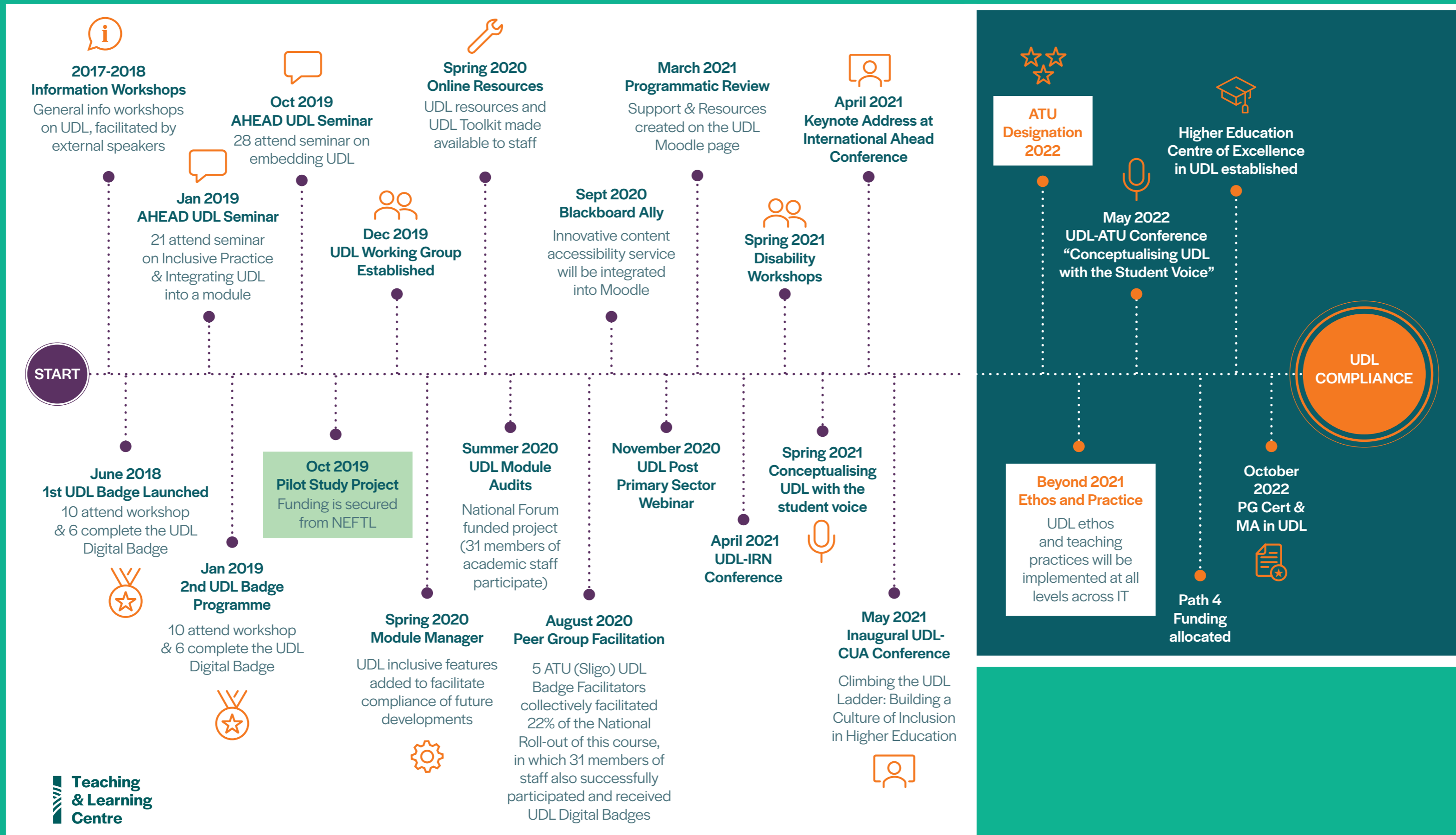


ATLANTIC TECHNOLOGICAL UNIVERSITY A COLLABORATIVE SUBMISSION

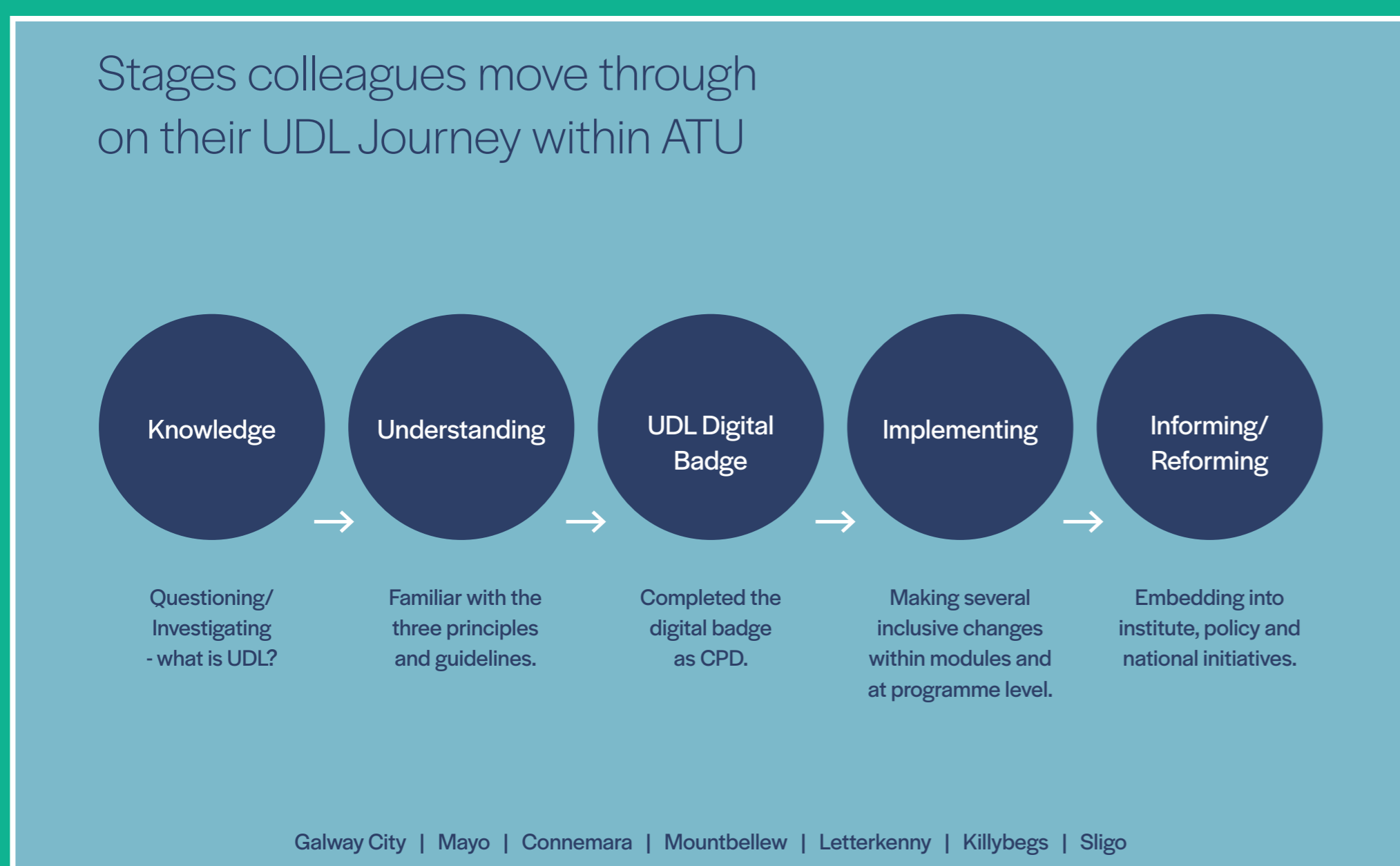
Lead Applicant Information:

Dr. Niamh Plunkett, Head of Teaching & Learning, ATU Sligo & Maureen Haran, UDL Lecturer - HE UDL Centre of Excellence

UDL IMPLEMENTATION PROCESS



STAGES OF UDL JOURNEY



Student Focus Group responses to perception of equitable learning

Four focus group interviews: 18 questions with each group, provided a substantive amount of information which is difficult to layout comprehensively. The following provides a flavour of how students perceive UDL in relation to their learning.

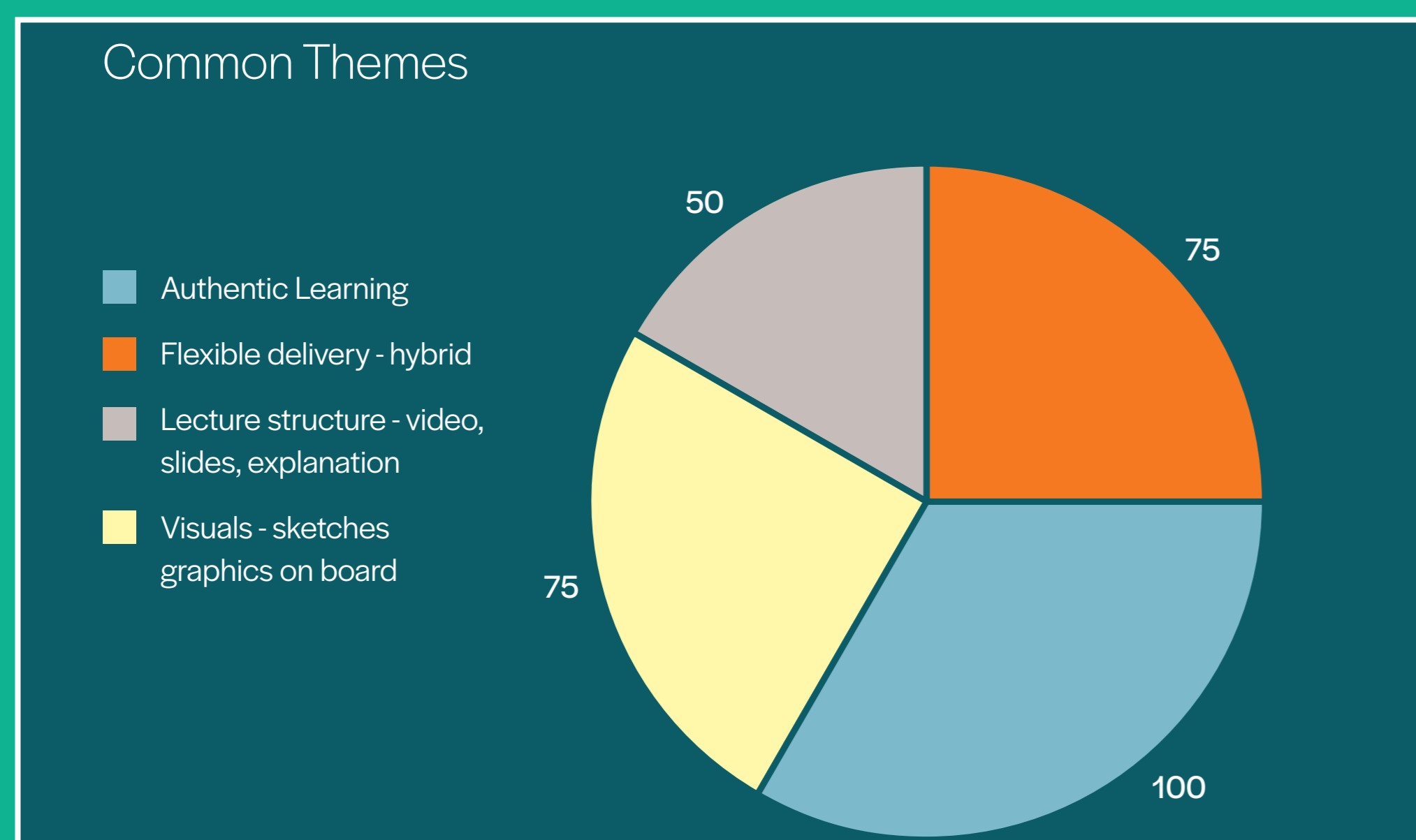
Student Responses

Equity Equality

“Equal opportunities in our studies.”

“Access to info regardless of background or identity.”

Equitable learning has been described as being inclusive, fair and impartial. In the context of your learning, what does equitable learning mean to you?



FUTURE PLANS

- Future Plans
UNDER THE HE UDL CENTRE OF EXCELLENCE
- ATU UDL Student Working Group
 - Student Workshops & Info Sessions
 - Engagement with USI
 - Digital Badge development for students
 - Panel formation to target the student voice across all courses and stages of implementation
 - International collaboration, fostering transferrable inclusive legislation to the Irish context
 - L9 UDL PG Cert/ MA Offering: 2022 ATU, 2023 nationally, 2024 internationally

Climbing the UDL Ladder

Building a culture of inclusion in higher education

SCAN ME